



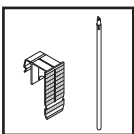
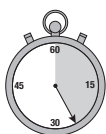
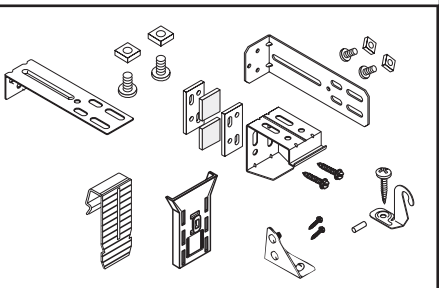
# HOW TO INSTALL

## Inside- or Outside-mount 2" Wood Blinds

1

### Everything needed to install your blind

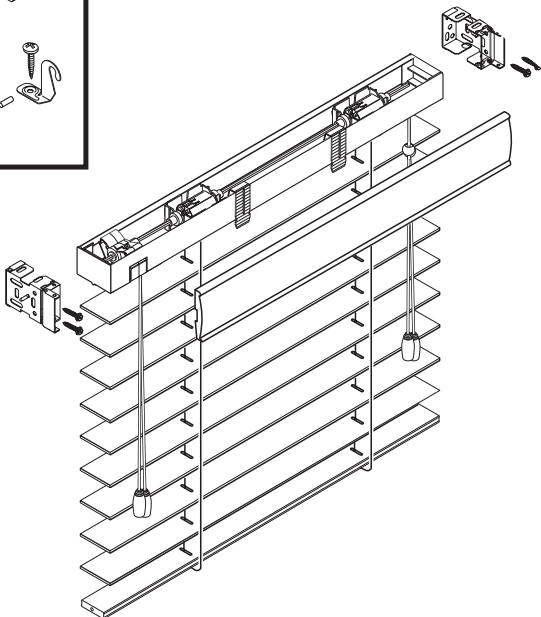
Optional



Tools Needed



1/16" or 3/32"

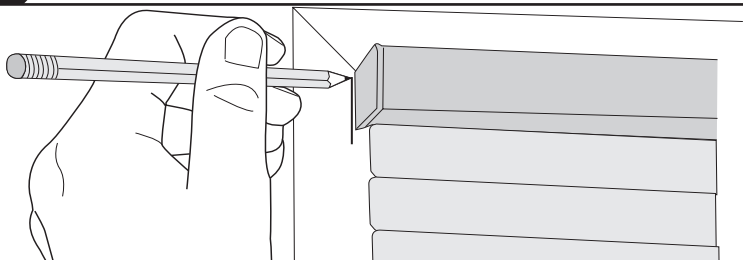


#### Center Support Bracket Requirements

|                         |            |
|-------------------------|------------|
| Widths to 48"           | 0 brackets |
| Widths 48 1/16" to 72"  | 1 brackets |
| Widths 72 1/16" to 96"  | 2 brackets |
| Widths 96 1/16" to 120" | 3 brackets |

2

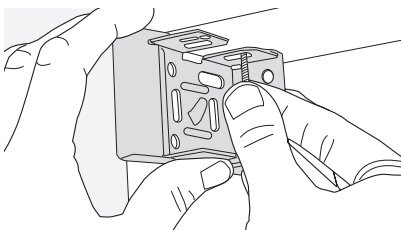
### Mark location of blind (Outside Mount)



3

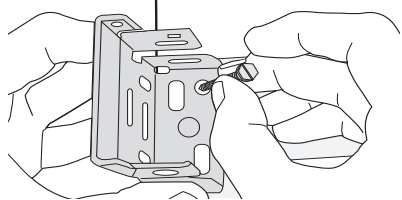
### Mark bracket location

#### Ceiling Mount



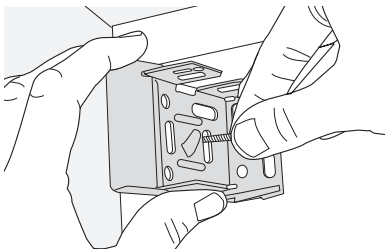
OR

#### Back Mount



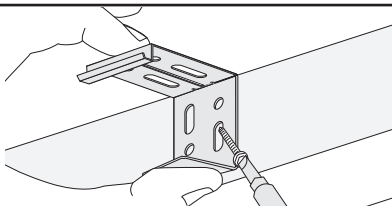
OR

#### Side Mount

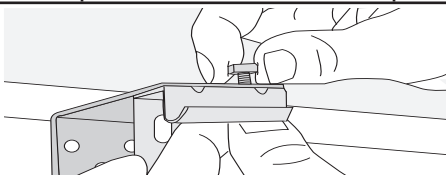
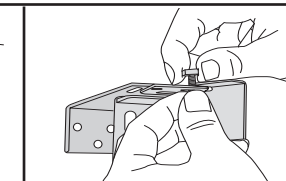
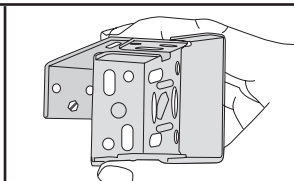
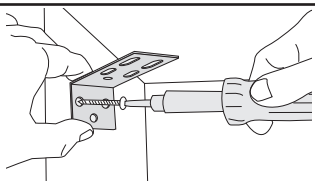


3

### Optional center support(s)/projection brackets

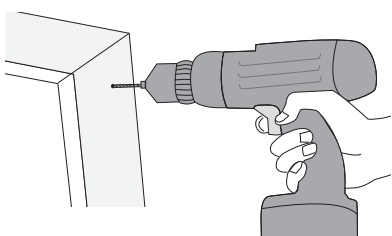


Position the center support(s) in line with the mounting brackets so they will not interfere with the ladder tapes. Space evenly and keep out of the way of other working parts.



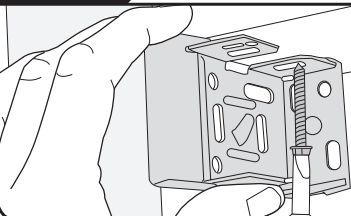
4

### Drill holes

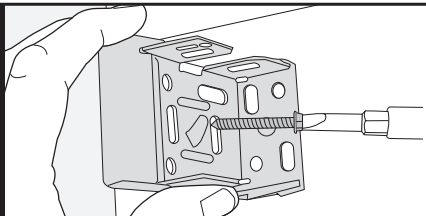


5

### Screw in brackets

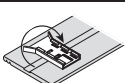
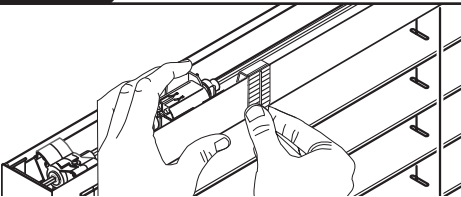


OR  
•  
O  
•  
OU



6

### Attach valance clip

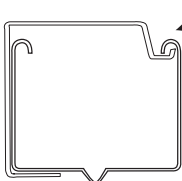
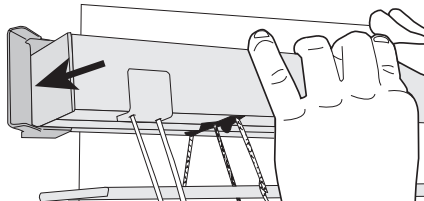


Groove must either be centered or at top

Space clips evenly across width. Clips must not interfere with ladder tapes.

7

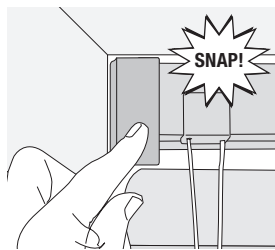
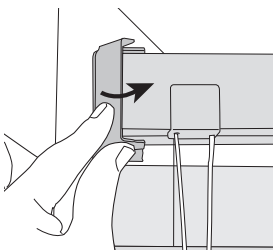
### Mount blind in brackets



Headrail/Center Support Profile

8

### Close door on brackets

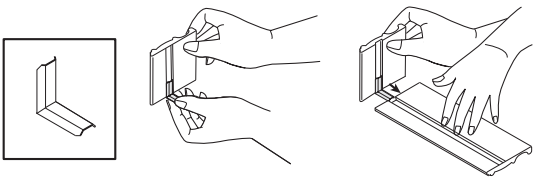


8

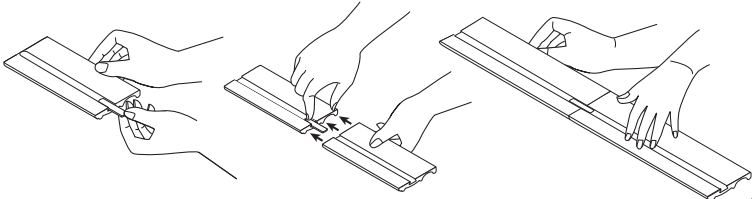
Optional valance with returns and spliced valances

Valance returns

Some returns are pre-assembled

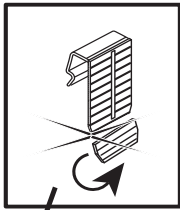


Spliced valance

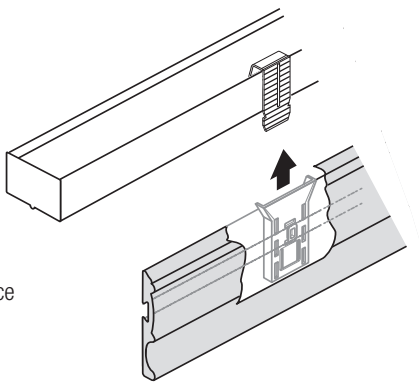


9

Attach valance

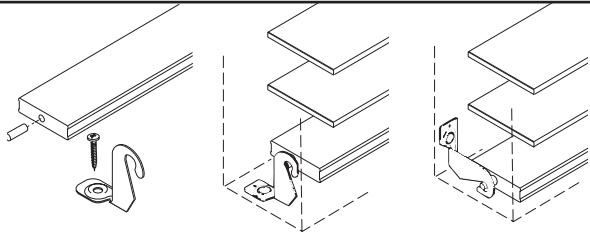


Remove tab only if visible below valance



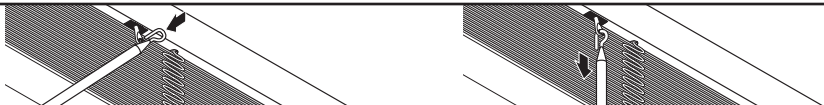
9

Optional hold-down brackets



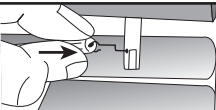
Additional instructions

Attach Tilt Wand



Or

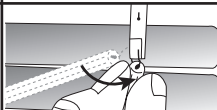
1



2



3



Wipe with a soft cloth or lightly vacuum with a soft brush attachment.

