

Open Shelf Console

Free Plans to build an Open Shelf Console.

PureBond[®]
FORMALDEHYDE-FREE TECHNOLOGY

Materials and Tools:

Materials:

- 1 sheet 3/4" PureBond Plywood cut into strips 11 1/4" wide or you can use 3 - 1x12 boards @ 8 feet long
- 1 - 1x4 @ 6 feet long
- 2 - 1x2 @ 8 feet long
- 2 - 1x3 @ 6 feet long
- 1/4 plywood (Whitney used PureBond) for back and door backs
- Recommend pocket hole construction with 1 1/4" pocket hole screws and then 1" and 1 1/4" finish nails for attaching face frame, and 1/4" plywood

Tools:

- Measuring Tape
- Square
- Pencil
- Safety Glasses
- Hearing Protection
- Kreg Jig™
- Drill
- Circular Saw
- Compound Miter Saw
- Nailer
- Sander

Cut List:

- Sides - 2- 1x12 @ 39 1/4"
- Top - 1- 1x12 @ 39 1/2"
- Bottom Shelf - 1- 1x12 @ 36" (I positioned this shelf where the top of the shelf is 7 3/4" from the top of the cabinet)
- Center Divider - 1- 1x12 @ 35 3/4"
- Shelves under baskets - 2 - 1x12 @ 17 5/8"
- Footer Front - 1- 1x4 @ 39"
- Footer sides - 2 - 1x4 @ 11 1/4"
- Front Trim - 3 - 1x2 @ 35 3/4"
- Top front - 1- 1x2 @ 39 1/2"

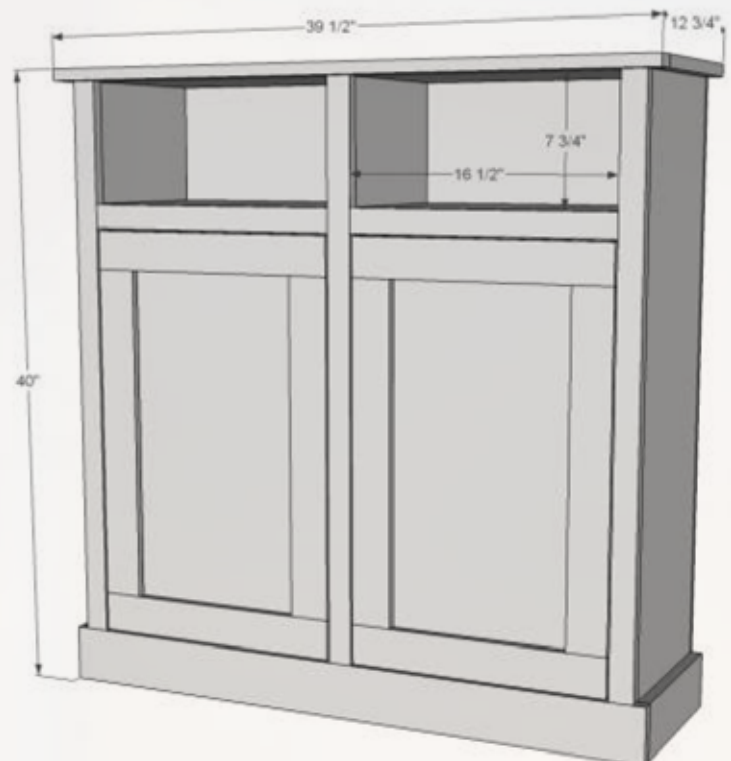
Doors:

- Whitney used 1x3 for the doors.
- Door tops - 16 1/4"
- Door Sides - 21 1/4"
- 1/4" PureBond for the doors at 16x26"

Optional shelves on inside from scraps. If you use the 1x12 it will need to be cut down about an inch to make room for the flush doors.

Back:

- 1/4" PureBond @ 37 1/2 x 39"





Open Shelf Console

Free Plans to build an Open Shelf Console.

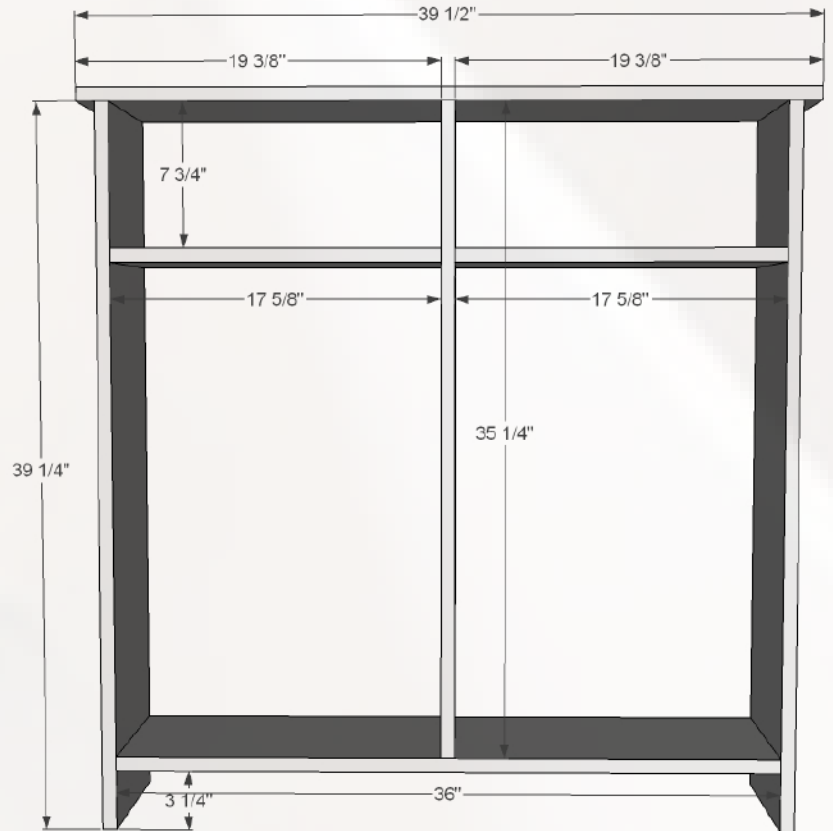
PureBond[®]
FORMALDEHYDE-FREE TECHNOLOGY

General Instructions:

Please read through the entire plan and all comments before beginning this project. It is also advisable to review the Getting Started Section. Take all necessary precautions to build safely and smartly. Work on a clean level surface, free of imperfections or debris. Always use straight boards. Check for square after each step. Always predrill holes before attaching with screws. Use glue with finish nails for a stronger hold. Wipe excess glue off bare wood for stained projects, as dried glue will not take stain. Be safe, have fun, and ask for help if you need it. Good luck!

Step #1

Build the box first. I recommend using 3/4" pocket holes and 1 1/4" pocket hole screws and glue.





Open Shelf Console

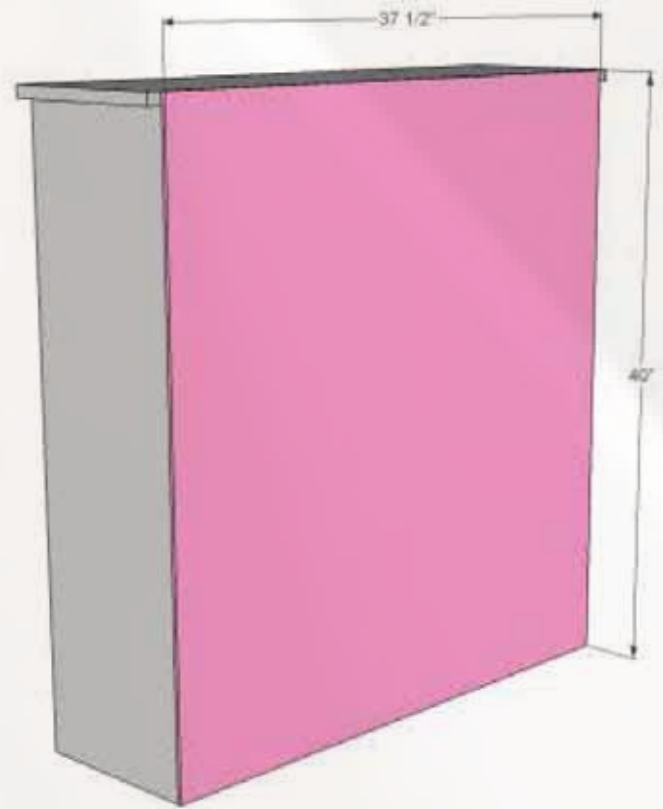
Free Plans to build an Open Shelf Console.

PureBond.
FORMALDEHYDE-FREE TECHNOLOGY

Step #2



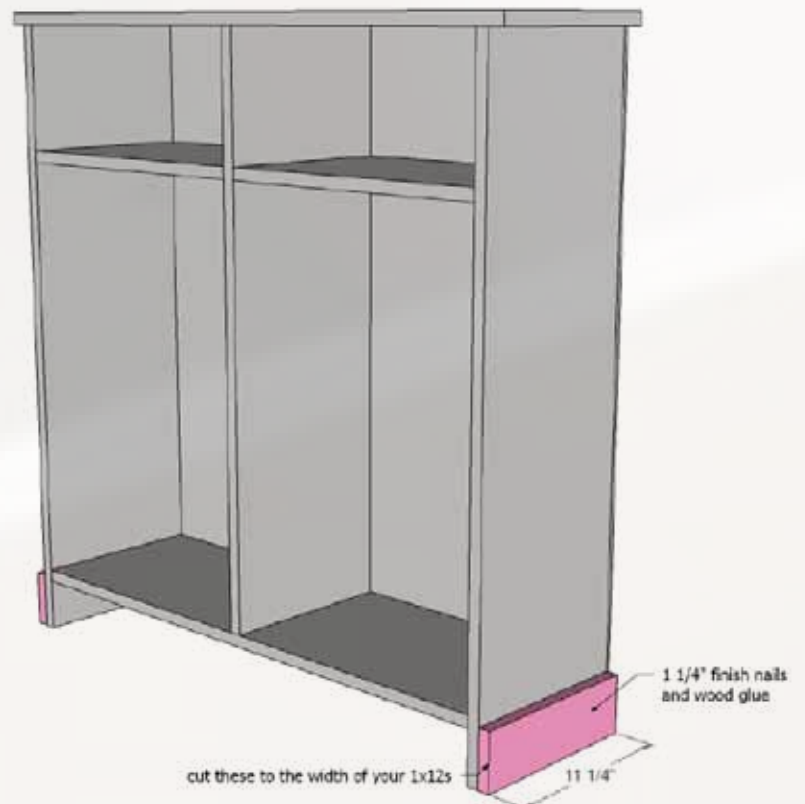
Attach back with glue and finish nails. Attach to center divider and all fixed shelves.



Step #3



Attach footer sides with finish nails and glue.



Open Shelf Console

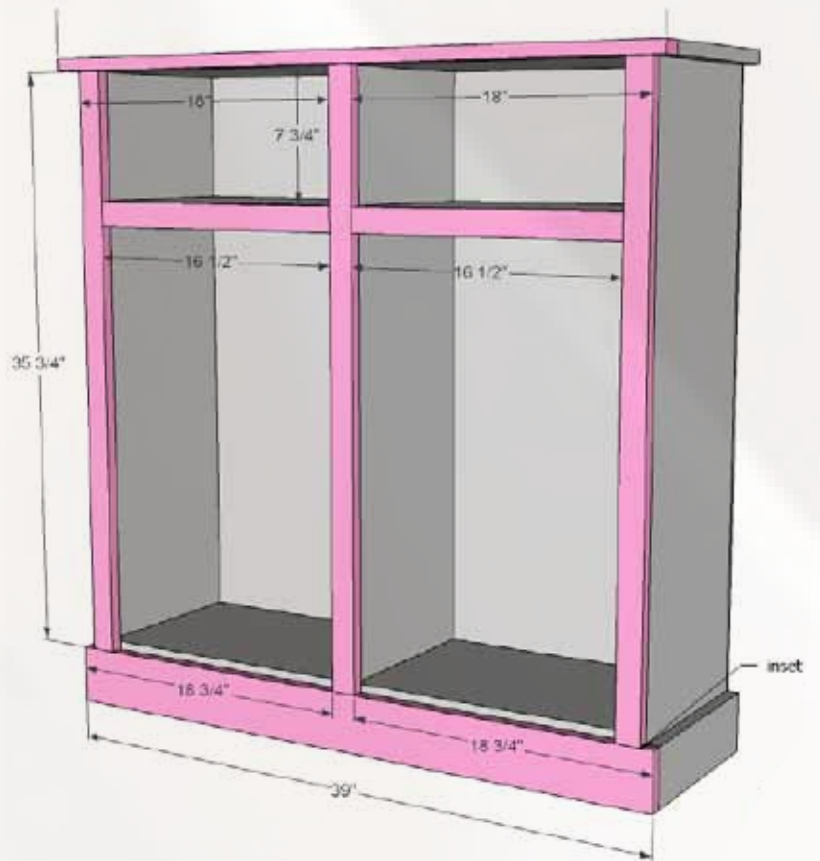
Free Plans to build an Open Shelf Console.

PureBond.
FORMALDEHYDE-FREE TECHNOLOGY

Step #4



I recommend building face frame first with pocket holes, then attaching completed face frame to front of cabinet with glue and finish nails.





Open Shelf Console

Free Plans to build an Open Shelf Console.

PureBond.
FORMALDEHYDE-FREE TECHNOLOGY

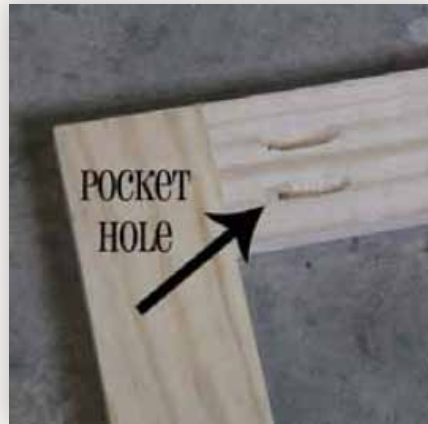
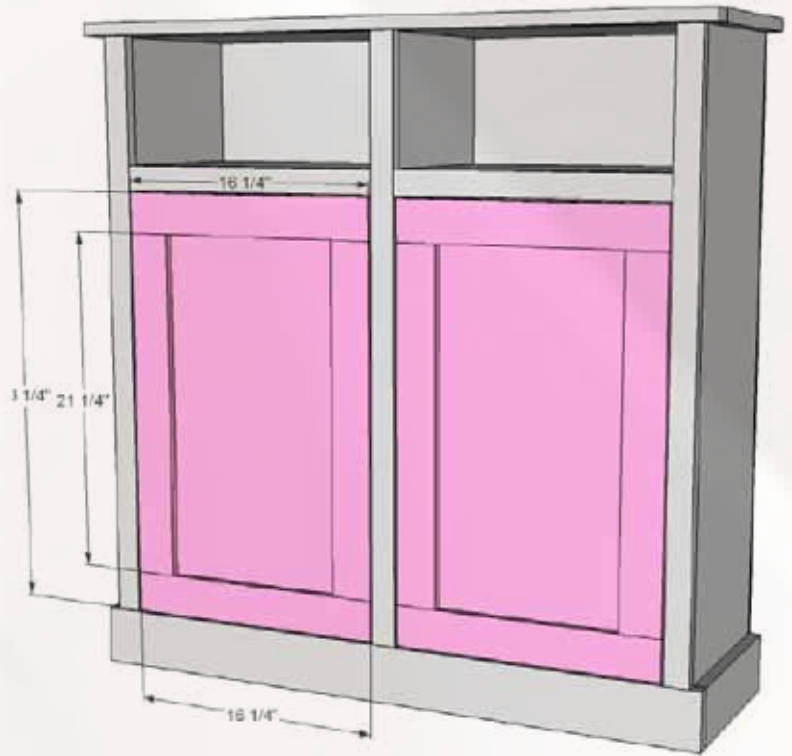
Step #5



Whitney made her doors by building a 1x3 frame with 3/4" pocket holes and 1 1/4" pocket hole screws. The door is designed 1/4" less in overall size so there's a 1/8" gap on all sides when the door is installed. Whitney cut plywood for the back and attached it with finish nails and glue. For shelves, you may need to trim down edge to accommodate back plywood on doors OR you could use 1x10 boards for the interior cabinet shelves.

Preparation Instructions:

Fill all holes with wood filler and let dry. Apply additional coats of wood filler as needed. When wood filler is completely dry, sand the project in the direction of the wood grain with 120 grit sandpaper. Vacuum sanded project to remove sanding residue. Remove all sanding residue on work surfaces as well. Wipe project clean with damp cloth. It is always recommended to apply a test coat on a hidden area or scrap piece to ensure color evenness and adhesion. Use primer or wood conditioner as needed.



FEATURING

PureBond.

FORMALDEHYDE-FREE TECHNOLOGY

www.purebondplywood.com