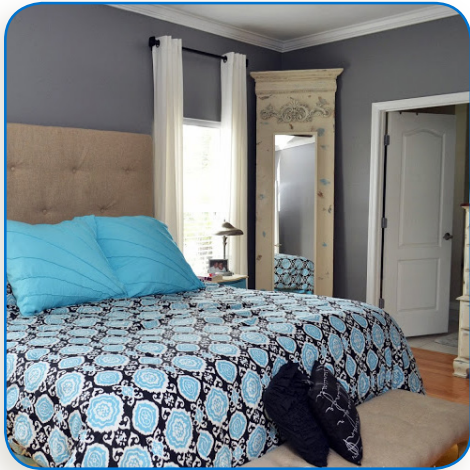




## Project: Taping and Painting a Wall

From Katie at  
[SewWoodsy.com](http://SewWoodsy.com)



### Paint less, tape more

When you take the time to tape baseboards, crown molding and other pieces you don't want paint on, painting is a breeze. Yes, taping does take time, but at the end of the day, you'll be happy you've saved time and your molding!



### Supply List:

- ScotchBlue™ Painter's Tape
- ScotchBlue™ Heavy Duty Non-Slip Drop
- Paint
- Paint roller



### Step 1

The first step is to tape the baseboards with ScotchBlue™ Tape. Lay a drop on the ground to protect your floor from any paint drops. Next, tape around the windowsills.



Get it.  
Got it.



## Project: Taping and Painting a Wall (cont.)

From Katie at  
[SewWoodsy.com](http://SewWoodsy.com)

### Step 2

Once these areas are taped off, use painter's tape to cover the crown molding. Crown molding is beautiful and the last thing you want to do is get paint on it!



### Step 3

Now, it's time to paint! Cut in the edges and roll. Painting a wall once everything is taped off is a breeze, and you know you will end up with perfect, clean lines.



ScotchBlue.™ See what you can do.

sponsored by:

